



Innovation  
that excites

# NISSAN X-TRAIL



[Exterior Design](#) | [Interior Design](#) | [Technology & Performance](#) | [Style & Accessories](#) | [Technical Specifications](#) | [Commitments](#)

[Print](#) | [Close](#)

[REQUEST A TEST DRIVE](#)



**SHARE** the joy of life's adventures in a bigger, bolder crossover that has everything you need to thrive: muscular sculpted styling, solid capabilities, next-level technologies to keep you in control and all the space, comfort and flexibility you need to enjoy your action-packed trips with the kids. So where to next? Call up directions and your favourite driving music at the touch of a button and go explore. The 2019 Nissan X-TRAIL: built to build **FAMILIES**.



[REQUEST A TEST DRIVE](#)





NISSAN  INTELLIGENT MOBILITY

## NEXT-LEVEL TECHNOLOGY FOR A CONFIDENT AND ENERGISING DRIVE

Nissan Intelligent Mobility is redefining the way we power, drive and integrate cars in the world around us. It's bringing you and your X-TRAIL closer together for a more confident, more exhilarating ride. It's making your journey more personal through advanced connectivity and empowering you through progressive technologies. It's enhancing the joy of being behind the wheel and turning the world into a safer place everyday.



[Exterior Design](#) | [Interior Design](#) | [Technology & Performance](#) | [Style & Accessories](#) | [Technical Specifications](#) | [Commitments](#)  
Page 1 | Page 2

[Print](#) | [Close](#)

[REQUEST A TEST DRIVE](#)





## BREATH-taking FROM TOP TO BOTTOM

Want to share an inspiring view on a starry night? Need a cosy refuge on a chilly morning? X-TRAIL makes sure you're well taken care of.

To design their zero-gravity-inspired seats with spinal support, Nissan's engineers looked to the cosmos. They recreated the relaxed posture of astronauts floating in space by designing an articulated front seat that supports you from the pelvis to the chest optimising the blood flow, and seat cushions that provide better pressure distribution. The result is exceptional comfort and less fatigue on the long distance trips of your adventures.

More inspiration comes from the available Power Panoramic Sunroof, offering everyone aboard the most stunning theatre view of the sky and stars.

[REQUEST A TEST DRIVE](#)







Glossy black trim

NissanConnect app with latest in-car infotainment, navigation and connectivity

Gear lever with double-stitched leather boot

Heated D-Shaped Steering Wheel with Premium Leather

Synthetic leather upholstery

**PREMIUM DETAILS THAT ARE A CLASS ABOVE THE REST**

Available tan leather with quilting and black seat inserts (Only on Tekna)

Available Heated Leather seats on 1st and 2nd rows

Available Power Panoramic Moonroof

**REQUEST A TEST DRIVE**



NISSAN ADVANCED DRIVE-ASSIST DISPLAY

# INNOVATION THAT'S RIGHT IN FRONT OF YOU.

Turn-by-turn directions, caller ID, available safety features... all your info is right before your eyes on your 5" colour Advanced Drive-Assist Display. Use the steering wheel controls to toggle between different screens. Just push on the arrows. Easy!

NISSAN INTELLIGENT MOBILITY



AUDIO



TYRE PRESSURE MONITORING SYSTEM



MATCH THE DISPLAY TO YOUR COLOUR



DRIVING AIDS



TURN-BY-TURN NAVIGATION



REQUEST A TEST DRIVE





**BOSE**  
**PREMIUM BOSE  
AUDIO SYSTEM.**

Soar to the sound of your Premium Bose Audio System. An expansive listening experience in both the front and back, it fills the X-TRAIL with music of both depth and precision.

**CUSTOM-TUNED SOUND**

Eight high performance speakers channel sound throughout the vehicle: tweeters, front and rear woofers in the doors and a subwoofer at the back work in harmony to deliver wider, clearer sound with a deep, powerful bass - all perfectly balanced to suit you.

\*Only available on 5 seat Tekna grade

[REQUEST A TEST DRIVE](#)

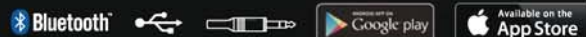




NissanConnect™

## YOUR WORLD AT YOUR FINGERTIPS.

Thanks to NissanConnect EVO with Navigation and Mobile Apps, X-TRAIL is your smartphone's best friend. No more separation anxiety for you! From now on, your own hand-picked music, latest tweets, Facebook, TripAdvisor and more can all come along for the ride, seamlessly integrated through your smartphone and X-TRAIL's 7-inch color touch-screen.



\* Available from Acenta Premium Grade





### SLIDE, GLIDE AND SWING WIDE.

**A SMARTER 2ND ROW.** Thanks to the X-TRAIL's flexible seating system, this 2nd row is truly first class. The 60/40 split seat slides forward for easy access and adjusts to give you more boot space, more legroom, and everything or anything in between. You can also recline the seats, when it's time to just relax.

**OPTIONAL 3RD ROW.** The X-TRAIL's folding 3rd-row 50/50 split seat gives you additional versatility. Perfect for accommodating extra passengers and their gear, it also folds down completely to make a flat boot floor for maximum storage capacity.

**REAR 77° WIDE OPENING DOORS.** The X-TRAIL's rear doors swing out to nearly 80°, giving you easy access to the kids, the cool-box, the snowboards... making life so much easier.



### SEAT FIVE OR ADAPT TO SEVEN COMFORTABLY

Sit back and enjoy the stunning view through the available Power Panoramic Sunroof. First class front headroom and thoughtful 2nd row vents help keep everyone comfortable. An available 3rd row of seats with a 50/50 folding split is ideal solution when you need to fit more family members and friends inside of your new X-TRAIL – or you can fold it down completely, making the cargo floor flat and Maximising the storage space.





## NISSAN HANDSFREE POWER TAILGATE

# INNOVATION THAT GIVES YOU A HAND

Got your arms full ? No worries ! You can open the back door hands-free. Just stand about three feet away with your iKey in your pocket and swing your foot under the centre of the bumper - the door will open with a couple of seconds.

[REQUEST A TEST DRIVE](#)







**NISSAN HANDSFREE POWER TAILGATE**  
**LITTLE DETAILS THAT MAKE A BIG DIFFERENCE**

At Nissan, we innovate to make your life easier. Details like the Nissan handsfree power tailgate and the wide opening of the rear doors take the hassle out of packing and unpacking so that you can make the most of your precious days out.

**SINGLE-HANDEDLY REINVENTING VERSATILITY**

The exclusive Cargo System adapts to your next trip in an instant. An adjustable set of shelves and dividers offer a variety of 9 configurations - it's so easy, you can do it with one hand.



Secret spot. A long, flat floor for big items, with under-floor storage for things you want to keep out of sight, such as a laptop.



Lower your floor for added height to fit in those tall items.





## SEE ALL SIDES OF THE SITUATION

### BIRD'S EYE VIEW

Intelligent AVM\* gives you a virtual 360° bird's eye view of your vehicle to bring your parking space and manoeuvring capabilities into full perspective.

### REAR VIEW OR FRONT VIEW

Thanks to Intelligent AVM\*, you can check the front and back of the car while remaining comfortably in the driver's seat.



### STRESS-FREE PARALLEL PARKING

Intelligent AVM\* provides visuals that allow you to park like a pro.



### SQUEEZE IN ANY SPOT STRAIGHT

Intelligent AVM\* provides multiple views to help you park straight into your space without a scrape.



### GARAGE PARKING IS A CINCH

Intelligent AVM\* provides visuals that help you pull all the way into a garage, showing any objects on the floor and ensuring you've cleared the garage door.



### HOOK UP A TRAILER WITH EASE

Intelligent AVM\* provides an overhead view and rear bumper view to help you align to a trailer hitch with ease.

\*AVM = Around View Monitor

NISSAN INTELLIGENT MOBILITY

### RIGHT ON THE NOSE

With a front and overhead view, you know just how far to pull up - without going too far.

### FEAR NO PARKING LOT

Tight spot with cars on either side? The overhead view helps you center your X-TRAIL in the space.

### SPARE YOUR WHEELS

The side is a great help for seeing how close you are to the curb.



### BACKGROUND SAVVY

In reverse, the display helps you see what's directly behind you, while the overhead view helps with smaller objects that might be hidden below your window.

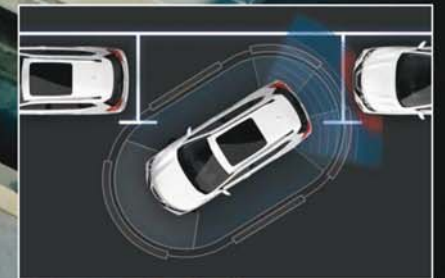
\*Available from Acenta Premium grade





**REVERSE PARK**

No need to twist your neck: you can count on the rear view camera when you're reversing.



**INTELLIGENT PARK ASSIST**

Around View Monitor gives you a 360° view of your car, helping you park more safely. Or let Intelligent Park Assist take care of the steering while you focus on the pedals, for both parallel and reverse parking.

**SEE MORE AROUND YOU**

**BECOME A MASTER OF MANOEUVRABILITY**

When the going gets tough, Nissan Intelligent Park Assist makes it smoother. Just line up your car with the parking space and it will guide you in, X-TRAIL offers an Intelligent Around View Monitor with Moving Object Detection. Four cameras give you a virtual 360° bird's-eye view of your vehicle, with selectable split-screen close-ups of the front, in addition to rear and curbside views for a better look.







**GET A HAND WHEN YOU WANT IT**  
**STEPPING IN WHEN YOU NEED IT**

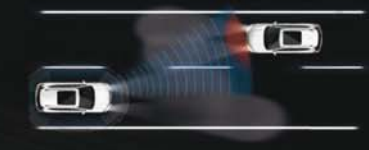
Meet your co-driver. It sees, it senses, it jumps in. From smart safety features that step in on your behalf to fully autonomous driving aids, from Intelligent Park Assist to Intelligent Emergency Braking with Pedestrian Recognition, Nissan X-TRAIL acts as your N°1 partner, always looking out for you, always there to support you, and never forgetting about those around you.



**INTELLIGENT EMERGENCY BRAKING WITH PEDESTRIAN RECOGNITION.** Constantly monitoring the presence of objects or pedestrians in your way, this system can prevent you from bumping anybody hidden from the driver's perspective.



**LANE DEPARTURE WARNING.** This system will alert you of drifting by giving audible and visible warnings.



**HIGH BEAM ASSIST.** See more on dark roads. This system will activate the beams as soon as you need them and temporarily dip the lights for oncoming traffic.







**REAR CROSS TRAFFIC ALERT.** This system will warn you if there is any oncoming traffic or large objects behind you when you're reversing.



**TRAFFIC SIGN RECOGNITION.** Stick to the latest speed limits thanks to automatic road sign detection as you go.



**BLIND SPOT WARNING.** This system can see what the eye cannot. It will warn you if it detects any vehicles in your rear diagonal blind spot.

GET A HAND WHEN YOU WANT IT

## ALWAYS LOOKING OUT FOR YOU

Nissan's Intelligent Driving Systems use advanced radar technology to constantly monitor all the activity around you, keeping tabs on the traffic and helping you handle any unexpected situations. It's like having an extra pair of eyes keeping watch so that you can make the most of your family adventure.



GET A HAND WHEN YOU WANT IT  
**MORE EYES ON THE ROAD**

X-Trail includes two important Nissan technologies to help keep you and your family safe on the road. Intelligent Cruise Control adjusts your speed to match the road conditions ahead, while Lane Keep Assist steers the car if you drift over the line. Relax, stay focused: We've got your back.



**INTELLIGENT CRUISE CONTROL.**  
Adjusts your car speed to maintain safe distance according to the flow of traffic.



**LANE KEEP ASSIST.**  
Helps to keep the vehicle centered during single lane driving, even on slight curves. Steering Assist will provide small steering inputs to help the driver center the vehicle in the lane.





**DRIVE MORE LIKE A PRO**  
**X-TRAIL, QUIETLY MAKING YOU A BETTER DRIVER.**

The X-TRAIL is so agile and responsive, it actually improves your driving. Nissan's Chassis Control technologies make it smooth to handle and supple yet secure to drive - ensuring an exciting yet comfortable journey for everyone on board. So pile in and have fun.

**INTELLIGENT RIDE CONTROL.**  
Take the rough with the smooth. This system applies subtle braking to prevent turbulence over bumps and enhances the overall comfort of the ride for the whole family.



**INTELLIGENT TRACE CONTROL.**  
Keep cool when cornering. This system adjusts brake pressure on individual wheels to keep you on an optimal line through turns.



**INTELLIGENT ENGINE BRAKE.**  
Feel the curve. This system controls the CVT as though you're driving manual through a light bend. It shifts down to smoothly decelerate on your way through the curve, then shifts back up to accelerate on your way out.







**DRIVE MORE LIKE A PRO**

**ADAPT TO RAIN OR SLEET IN THE BLINK OF AN EYE**

The X-TRAIL can adapt to changing conditions 30 times faster than the blink of an eye. Whether it's snow, rain-covered pavement or a tight turn, the system will automatically send power to the wheels that need it the most. Even in ideal conditions, the X-TRAIL's Intelligent 4x4 system pays big dividends: getting a grip has never felt better.



**STAND STILL ASSIST/AUTO HOLD.** No rolling backwards. With Stand Still Assist, the feature will hold your X-Trail at a stationary position for up to 3 minutes, at which point the electric parking brake will be applied if there is no driver interaction. The feature works on all gradients. Only available on manual transmissions.



**INTELLIGENT 4x4.** With X-TRAIL's All-Mode 4x4-i, is a system that's capable on-road and off. You can choose full-time 2WD for maximum efficiency. Auto Mode constantly monitors conditions and adjusts the balance of power between front and rear.







**INTELLIGENT POWER**  
**GO FURTHER WITH**  
**A CLEAR CONSCIENCE**

Looking for excellent fuel economy in a roomy SUV that's lots of fun to drive? That's what you get with X-TRAIL. From exterior aerodynamics that whisper through the wind to advanced engines transmissions including the virtually gearless XTRONIC and dual clutch DCT transmissions, it takes efficiency and performance to the next level.

Powering the X-TRAIL are Nissan's advanced 1.7 litre diesel and 1.3 litre Petrol engines, providing enhanced fuel economy, lower CO<sub>2</sub> emissions and excellent performance. These engines feature Nissan's automatic Start/Stop technology, which automatically shuts down the engine when temporarily not in use - to save fuel, then smoothly and quickly restarts as you pull away. Nissan engines also provide up to 2000kg towing capacity for your X-Trail.

In the latest version of XTRONIC (Continuously Variable Transmission), friction is reduced up to 40% and the ratio coverage is increased greater than that of some 8-speed automatics. An Eco mode improves fuel economy at the touch of a switch. Combined with such smoothperformance, it's like riding a continuous wave of power.

For engine performance data such as CO<sub>2</sub> emission and fuel consumption, please refer to model technical data sheet available online and at your local dealership.





## NISSAN GENUINE ACCESSORIES

# CUSTOMISE YOUR ADVENTURES TO SUIT YOUR FAMILY

Make your next adventure with the family even more memorable by kitting out your X-TRAIL to suit you. From illuminated entry guard and double USB sockets to family-sized ski/snowboard carriers and more – you can count on Nissan Genuine Accessories to keep the whole crew comfortable and ready for action.



1. Rear styling plate (compatible with removable towbar)
2. Removable towbar
3. Ski/snowboard carrier up to 6 pairs slideable

Accessories and any additional equipment customer may fit after sales can have an impact on the CO<sub>2</sub> emission and fuel consumption of the car.

4. Double USB socket for second row
5. Side steps aluminum
6. Smartphone holder 360 grip black
7. Door entry guard illuminated





## COLOURS



Titanium Olive



Monarch Orange



Chilli Pepper



Sapphire Blue



Storm White



Universal Silver



Gun Metallic



Ebisu Black



Palatial Ruby



Picador Brown

## ALLOY WHEELS



17" alloy (silver painted)



18" alloy (machine cut)



19" alloy (machine cut)

## TRIMS

### VISIA/ACENTA/ACENTA PREMIUM/N-CONNECTA



BLACK CLOTH INTERIOR

### TEKNA



LEATHER WITH PERFORATION - CREAM



LEATHER WITH PERFORATION - BLACK

### TEKNA/OPTION



TAN LEATHER WITH BLACK LEATHER INSERTS

## DIMENSIONS

- A: Wheelbase: 2,705 MM
- B: Overall length: 4,690 MM
- C: Overall width: 1,820 MM (1,830 MM with 19" tire)
- D: Overall height: 1,710 MM (1,740 MM with roofrails)



AT NISSAN,  
**WE FOCUS  
ON QUALITY.**



## MASTERED THROUGH EXPERIENCE

At Nissan, we do everything with the customer in mind. Every action and decision we make, is made with the utmost care, precision and quality because ultimately, it's for you. From conception to car construction, from testing to transparency, from customer service to commitment. Quality is in every fine detail.



### 360° PROCESS

We build in quality from the outset, meticulously conceiving each car to make them more comfortable and more durable through innovative design, intelligent technology and thoughtful details inspired by you.



### SAFETY

We work with our intelligent driving systems to constantly look out for you and help you avoid any mishaps for a bolder, more confident driving experience day after day. Our Around View Monitor uses 4 cameras to give you a virtual birds eye view of your car in its surroundings.



### EXTREME RELIABILITY

We push our cars to the limit to guarantee their daily performance and reliability. We travel millions of kilometres in pre-production tests, open and close doors and bonnets thousands of times a day and use real volcanic dust from Japan to test window resistance.



### ULTIMATE PROOF | reevoo

Our commitment to quality is best demonstrated by you. Search for testimonials, reviews and ratings online or find out what people are saying about Nissan on Reevoo. It's the best place to compare vehicles and get real answers from real owners you can trust.

<https://www.nissan.co.uk/vehicles/new-vehicles/xtrail/customer-reviews.html>





OUR PROMISE. YOUR EXPERIENCE

**THERE'S NO TIME LIMIT** ON HOW LONG YOU WILL BENEFIT FROM OUR PROMISES. IF YOU HAVE JOINED THE YOU+NISSAN PROGRAM, AND WANT TO BE SPOKEN TO IN A GENUINE, OPEN AND HONEST MANNER, WE WILL LOOK AFTER YOU. FOREVER. **THAT IS OUR PROMISE.**

#### FREE COURTESY CAR

**We promise** to keep you on the road whilst your car is being serviced. Book in advance and we'll ensure that a free courtesy car is available for you. We even have electric cars available at select service points, and a range of other transport solutions to suit your needs.



#### FREE VEHICLE HEALTH CHECK

**We promise** to give your car a free health check prior to any work being carried out, so you know exactly what needs to be done, and how much it will cost. All our prices are also fully accessible online and at our dealers.

#### SERVICE PRICE MATCH

**We promise** to deliver the highest care for your Nissan thanks to the expertise of Nissan trained teams and the use of Nissan genuine parts. We simply know best how to service your Nissan. And to guarantee best value-for-money, Nissan will price match like-for-like quotes within 10km of your local dealer.



#### LIFETIME NISSAN ASSISTANCE

**We promise** to keep you on the road 24/7. Should anything unexpected happen, we guarantee 24-hour Nissan assistance, whatever the age of your Nissan.

ANYWHERE, ANYTIME, ANYTHING. JUST CALL 0800 000 000 AND WE'LL BE RIGHT THERE.

## SERVICE CONTRACTS

Nissan Service Contract is the best way to give your Nissan X-TRAIL the maintenance it deserves! We take good care of your Nissan whilst keeping your aftercare at a fixed price over years. While bringing your car at our dealership, we will change your parts and fluids in accordance with Nissan official service schedule and perform check ups for peace of mind journeys. Total budget and plan control, Nissan will inform you of due visits and propose the most suitable service and timing for your services.

## EXTENDED WARRANTY

Nissan Extended Warranty gives you the opportunity to extend the 3 Years/60,000 miles warranty for a longer period or mileage. Select the contract that best suits your driving usage. In case of a repair, only Nissan genuine parts will be used and fitted by Nissan trained technicians. For your peace of mind, 24/7 European roadside assistance is included (if applicable).

## AT NISSAN, YOU BRING OUT THE BEST IN US.

You spark our imagination. You provoke our ingenuity. You inspire us to change the rules and innovate. And at Nissan, innovation is not just about additions and extensions; it's about crossing the line to reinvent the status quo. It's about developing unexpected solutions to satisfy your wildest and most pragmatic desires. At Nissan, we design cars, accessories and services that break the mould - making the practical exciting and the exciting practical to offer you a more exhilarating driving experience everyday.



### NISSAN X-TRAIL OFFERS YOU:

**3-YEAR WARRANTY OR 60,000 MILES**

**YEARLY OR 18,000 MILES INTERVAL FOR DIESEL ENGINES**

**YEARLY OR 12,500 MILES INTERVAL FOR PETROL ENGINES**





Innovation  
that excites

NISSAN  
**X-TRAIL**



[Exterior Design](#) | [Interior Design](#) | [Technology & Performance](#) | [Style & Accessories](#) | [Technical Specifications](#) | [Commitments](#)

[Print](#) | [Close](#)

[REQUEST A TEST DRIVE](#)



# STANDARD EQUIPMENT

The X-Trail combines Nissan's acclaimed 4x4 heritage with fresh ideas and technologies inspired by the brand's ground-breaking Crossover models.

Together they form a Crossover that is built to build families.

## ALL NISSAN X-TRAILS COME WITH:

### SECURITY

- Remote central door locking with superlocking
- Engine immobiliser
- Thatcham alarm system

### SAFETY

- ABS with EBD and Brake Assist
- Electronic Stability Programme (ESP)
- 6 airbags
- 3 rear headrests
- ISOFIX childseat anchorage points (2nd row only)
- Rear door childlocks
- Stand Still Assist with Auto Hold Function (Manual transmission only)
- e-PKB (Electric Parking Brake)
- Chassis Control (Intelligent Engine Brake, Intelligent Trace Control and Intelligent Ride Control)
- Tyre Pressure Monitoring System
- Spare wheel

### INTERIOR STYLING

- 5" High Definition full colour TFT screen combimeter

### AUDIO

- AUX socket and USB port
- Remote audio control
- DAB/AM/FM/CD audio system with 4 speakers
- Bluetooth® with microphone

### EXTERIOR STYLING

- Chrome window surround
- Chrome door handles
- Black honeycomb front grille
- V-Motion front grille

### CONVENIENCE

- Front and rear electric windows
- Tilt and telescopic adjustable steering wheel
- Front and rear armrests
- Cruise control and speed limiter
- Electric heated mirrors with side turn signal light
- 60:40 Rear split folding, reclining and sliding bench
- Luggage Board System (9 combinations)

### VENTILATION AND VISIBILITY

- Manual air conditioning with pollen filter
- LED Daytime Running Lights

### OPTIONAL EXTRAS

- Premium Metallic Paint
- Pearlescent Paint
- Metallic Paint
- 7 seats
- 4WD transmission
- Smart Vision Pack (Intelligent Forward Emergency Braking with Pedestrian Recognition, Lane Departure Warning, Traffic Signal Recognition and Front and Rear Parking Sensors)

## VISIA

### IN ADDITION TO STANDARD EQUIPMENT

#### EXTERIOR STYLING

- 17" Alloy wheels

#### INTERIOR STYLING

- Cloth trim

#### OPTIONS\*

- 7 Seats
- Smart Vision Pack
  - Traffic Signal Recognition
  - Lane Departure Warning
  - Intelligent Forward Emergency Braking with Pedestrian Recognition
  - Front and Rear Parking Sensors





## ACENTA

### IN ADDITION TO VISIA

#### SAFETY

- Smart Vision Pack including:
  - Traffic Signal Recognition
  - Lane Departure Warning
  - Intelligent Forward Emergency Braking with Pedestrian Recognition
- Front and Rear Parking Sensors

#### AUDIO

- 6 speakers

#### EXTERIOR STYLING

- Front fog lights
- Rear privacy glass

#### INTERIOR STYLING

- Leather steering wheel and gear knob
- Panoramic roof with one-touch shade
- Metallic grain interior inserts

#### CONVENIENCE

- Dual zone automatic air conditioning
- Automatic electric folding mirrors
- Driver Lumbar Support

#### VENTILATION AND VISIBILITY

- Automatic headlights
- Rain sensing windscreen wipers
- Anti-Dazzle rear view mirror

#### OPTIONS\*

- 7 Seats



\*Options available at additional cost

## ACENTA PREMIUM

### IN ADDITION TO ACENTA

#### SAFETY

- Moving Object Detection

#### AUDIO AND NAVIGATION

- NissanConnect Evo 7" Touchscreen Navigation and Entertainment system
- Intelligent Around View Monitor (360° colour camera)
- Sharkfin antenna

#### OPTIONS\*\*

- 7 Seats



\*May contain artificial leather  
\*\*Options available at an additional cost

## N-CONNECTA

### IN ADDITION TO ACENTA

#### EXTERIOR STYLING

- 18" Machine cut alloy wheels
- Satin roof rails

#### CONVENIENCE

- Nissan Intelligent Key
- Hands-Free automatic opening power tailgate
- Push start button
- Passenger Seat Lifter

#### OPTIONS\*

- 7 Seats



\*Options available at additional cost  
Images may not be representative of specific grade

## TEKNA

### IN ADDITION TO N-CONNECTA

#### SAFETY

- Safety Shield Technologies including:
  - Blind Spot Warning
  - Rear Cross Traffic Alert

#### EXTERIOR STYLING

- 19" Machine Cut Alloy Wheels
- Chrome Side Mouldings

#### INTERIOR STYLING

- Leather seats\*

#### CONVENIENCE

- Electrically adjustable driver's seat (slide, recline, lifter, lumbar)
- Electrically adjustable passenger's seat (slide, recline)
- Front heated seats
- Heated Rear Seats (Second Row)
- Heated Steering Wheel
- Intelligent Park Assist

#### VENTILATION AND VISIBILITY

- LED headlights with Adaptive Front Lighting System
- Automatic headlights
- High Beam Assist

#### AUDIO AND NAVIGATION (Only on 5 seat models)

- Premium Bose® Audio System
- 8 Bose® Speakers: 2 Tweeters, 4 high and medium frequency door speakers
- 7.7-litre dual driver subwoofer
- Digital Amplifier

#### OPTIONS\*\*

- 7 Seats
- Cream leather
- Premium Tan Leather with Black Inserts
- Drive Assist Pack (1.7dCi 150 Manual):
  - Intelligent Cruise Control
  - Intelligent Lane Intervention
  - Lane Keep Assist



\*Some parts of leather seats may contain artificial leather  
\*\*Options available at an additional cost



## COLOURS



TITANIUM OLIVE (M)



MONARCH ORANGE (P)



CHILLI PEPPER (S)



SAPPHIRE BLUE (PM)



STORM WHITE (P)



UNIVERSAL SILVER (M)



GUN METALLIC (M)



EBISU BLACK (M)



PICADOR BROWN (P)

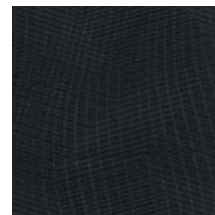


PALATIAL RUBY (P)

S - Solid Paint M - Metallic Paint P - Pearlescent Paint PM - Premium Metallic

## TRIMS

### VISIA - N-CONNECTA

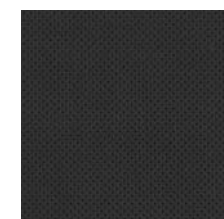


GRAPHITE CLOTH

### TEKNA



LEATHER WITH PERFORATION - CREAM



LEATHER WITH PERFORATION - GRAPHITE



LEATHER WITH OUTER BLACK INSERTS  
-PREMIUM TAN

## ALLOYS



17" Alloy wheels  
VISIA, ACENTA, ACENTA PREMIUM



18" Alloy wheels  
N-CONNECTA



19" Alloy wheels  
TEKNA

## X-TRAIL TECHNICAL DATA

MODEL	1.7 dCi 150 DIESEL				DIG-T 160 PETROL
	6-speed manual		Xtronic auto transmission		7-speed DCT auto transmission
	2WD Manual	4WD Manual	2WD Xtronic	4WD Xtronic	2WD DCT
Available grades	All	Acenta, Acenta Premium, N-Connecta, Tekna	Acenta, Acenta Premium, N-Connecta, Tekna	Acenta, Acenta Premium, N-Connecta, Tekna	Acenta, Acenta Premium, N-Connecta, Tekna
Seating capacity	persons	5 (7 optional)			

ENGINE		1.7 dCi 150 DIESEL		DIG-T 160 PETROL
Engine capacity	cc	1,749		1,332
Max. engine power <sup>(1)</sup>	kw(PS)/min-1	150		160
Max. torque <sup>(1)</sup>	Nm/min-1	340		270
Fuel type		Diesel		Petrol
Fuel tank capacity	Litres	60		

DRIVE TRAIN						
Transmission type		6-speed manual	6-speed manual	Xtronic	7-speed DCT auto transmission	
Driven wheels		2WD	All Mode 4x4-i	2WD	All Mode 4x4-i	2WD
Nissan Stop/Start technology		Yes				

CHASSIS		1.7 dCi 150 DIESEL		DIG-T 160 PETROL
Wheel size		17x7J, 18X7J, 19X7J		
Tyre size		225/65R17, 225/60R18, 225/55R19		

## DIMENSIONS



- A: Wheelbase: 2,705 MM
- B: Overall length: 4,690 MM
- C: Overall width: 1,820 MM (1,830 MM with 19" tyre)
- D: Overall height: 1,710 MM (1,740 MM with roof rails)



<sup>1)</sup> In accordance with 1999/99/EC. Figures are intended for comparisons between vehicles and may not reflect real driving results. Optional equipment, maintenance, driving behaviour, road and weather conditions may affect performance. Advertisements placed for WLTP tested petrol/diesel model from 1st January 2019 WLTP figures shown are for comparability purposes; only compare figures with vehicles tested to the same technical procedures. Actual real world driving results may vary depending on factors such as weather conditions, driving styles, vehicle load or any accessories fitted after registration. WLTP is a new test used for fuel consumption and CO<sub>2</sub> figures however until April 2020 the CO<sub>2</sub> figures are based on the outgoing (NEDC) test cycle.

MODEL	1.7 dCi 150 DIESEL				DIG-T 160 PETROL
	6-speed manual		Xtronic auto transmission		7-speed DCT auto transmission
	2WD Manual	4WD Manual	2WD Xtronic	4WD Xtronic	2WD DCT
Available grades	All	Acenta, Acenta Premium, N-Connecta, Tekna	Acenta, Acenta Premium, N-Connecta, Tekna	Acenta, Acenta Premium, N-Connecta, Tekna	Acenta, Acenta Premium, N-Connecta, Tekna
Seating capacity	persons	5 (7 optional)			

WEIGHTS & DIMENSIONS												
Seats		5 Seat	7 Seat	5 Seat	7 Seat	5 Seat	7 Seat	5 Seat	7 Seat	5 Seat	7 Seat	
Gross Vehicle Weight	kg	2110	2295	2175	2330	2150	2345	2210	2385	1985	2180	
Kerb weight	kg	1580 - 1654	1630 - 1693	1670 - 1719	1720 - 1802	1645 - 1708	1710 - 1742	1700 - 1763	1765 - 1802	1485 - 1537	1550 - 1576	
Max. trailer weight	braked	kg	2000	2000	2000	2000	1500	1500	1500	1500	1500	
	unbraked	kg	750	750	750	750	750	750	750	750	750	
Overall length	mm	4690										
Max axle weight	Front	kg	1115	1120	1140	1135-1145	1155	1165	1180	1185-1190	1020	1030
	Rear	kg	1045	1230	1085	1225-1250	1050	1230	1085	1240-1250	1010	1190
Overall width	mm	1820 (1830 with 19" tyre)										
Overall height	mm	1710 (1740 with roof rails)										
Wheelbase	mm	2705										
Min. turning circle (kerb to kerb)	m	11.2										
Luggage space	max. length	mm	935									
	max. width	mm	1142									
Luggage capacity	VDA (5 seat version)	l	565									
	VDA (7 seat version)	l	445 (135)									
	max. with folded seats (VDA)	l	1996									

PERFORMANCE														
Fuel consumption <sup>(19)</sup>	Low Phase - Min/Max	l/100km	73 / 75	74 / 76	75 / 77	77 / 79	8.2 / 8.6	8.5 / 8.8	9.1 / 9.3	9.3 / 9.5	9.8 / 10	10 / 10.1		
		mpg	377 / 38.7	372 / 38.2	367 / 37.7	35.8 / 36.7	32.8 / 34.4	32.1 / 33.2	30.4 / 31	29.7 / 30.4	28.2 / 28.8	28 / 28.2		
	Medium Phase - Min/Max	l/100km	6.2 / 6.4	6.3 / 6.5	6.5 / 6.7	6.6 / 6.8	6.5 / 6.9	6.8 / 7.1	7.2 / 7.5	7.4 / 7.6	7.6 / 7.9	7.8 / 8.1		
		mpg	44.1 / 45.6	43.5 / 44.8	42.2 / 43.5	41.5 / 42.8	40.9 / 43.5	39.8 / 41.5	37.7 / 39.2	37.2 / 38.2	35.8 / 37.2	34.9 / 36.2		
	High Phase - Min/Max	l/100km	5.6 / 5.8	5.7 / 6.0	5.9 / 6.1	6.0 / 6.2	5.9 / 6.3	6.1 / 6.5	6.4 / 6.7	6.6 / 6.8	7 / 7.2	7.1 / 7.3		
		mpg	48.7 / 50.4	47.1 / 49.6	46.3 / 47.9	45.6 / 47.1	44.8 / 47.9	43.5 / 46.3	42.2 / 44.1	41.5 / 42.8	39.2 / 40.4	38.7 / 39.8		
Extra High Phase - Min/Max	l/100km	7.2 / 7.4	7.3 / 7.5	7.3 / 7.5	7.4 / 7.6	7.5 / 7.9	7.7 / 8.1	8 / 8.3	8.1 / 8.4	8.8 / 9.1	9 / 9.2			
	mpg	38.2 / 39.2	37.7 / 38.7	37.7 / 38.7	37.2 / 38.2	35.8 / 37.7	34.9 / 36.7	34 / 35.3	33.6 / 34.9	31 / 32.1	30.7 / 31.4			
Combined - Min/Max	l/100km	6.5 / 6.7	6.6 / 6.8	6.7 / 7.0	6.8 / 7.1	6.9 / 7.3	7.1 / 7.5	7.5 / 7.8	7.6 / 7.9	8.1 / 8.4	8.3 / 8.5			
	mpg	42.2 / 43.5	41.5 / 42.8	40.4 / 42.2	39.8 / 41.5	38.7 / 40.9	37.7 / 39.8	36.2 / 37.7	35.8 / 37.2	33.6 / 34.9	33.2 / 34			
CO <sub>2</sub> mass emission (combined)*	17" & 18"	g/km	137	137	151	151	146	150	159	159	145	150		
	19"	g/km	143	143	154	154	150	154	168	168	149	154		
Emission Level		Euro 6d-TEMP												
Max. Speed	MPH	121				118				123				
Acceleration	0 - 62 mph (0 - 100 kph)	sec	10.7				12.7				11.5			



## PRICE LIST

GRADE	ENGINE	TRANSMISSION	BASIC PRICE £	VAT £	TOTAL RETAIL £	ON THE ROAD PRICE £*
VISIA	1.7 dCi 150	6 speed manual	21,008.33	4,201.67	25,210.00	25,795.00
ACENTA	1.7 dCi 150	6 speed manual	22,091.67	4,418.33	26,510.00	27,095.00
	1.7 dCi 150	4WD 6 speed manual	23,404.17	4,680.83	28,085.00	28,995.00
	1.7 dCi 150	CVT	23,300.00	4,660.00	27,960.00	28,545.00
	1.7 dCi 150	4WD CVT	24,612.50	4,922.50	29,535.00	30,445.00
	1.3 DIG-T 160	7 speed DCT	21,937.50	4,387.50	26,325.00	26,590.00
ACENTA PREMIUM	1.7 dCi 150	6 speed manual	22,983.33	4,596.67	27,580.00	28,165.00
	1.7 dCi 150	4WD 6 speed manual	24,295.83	4,859.17	29,155.00	30,065.00
	1.7 dCi 150	CVT	24,191.67	4,838.33	29,030.00	29,615.00
	1.7 dCi 150	4WD CVT	25,504.17	5,100.83	30,605.00	31,515.00
	1.3 DIG-T 160	7 speed DCT	22,829.17	4,565.83	27,395.00	27,660.00
N-CONNECTA	1.7 dCi 150	6 speed manual	24,175.00	4,835.00	29,010.00	29,595.00
	1.7 dCi 150	4WD 6 speed manual	25,487.50	5,097.50	30,585.00	31,495.00
	1.7 dCi 150	CVT	25,383.33	5,076.67	30,460.00	31,045.00
	1.7 dCi 150	4WD CVT	26,695.83	5,339.17	32,035.00	32,945.00
	1.3 DIG-T 160	7 speed DCT	24,020.83	4,804.17	28,825.00	29,090.00
TEKNA	1.7 dCi 150	6 speed manual	25,925.00	5,185.00	31,110.00	31,695.00
	1.7 dCi 150	4WD 6 speed manual	27,237.50	5,447.50	32,685.00	33,595.00
	1.7 dCi 150	CVT	27,133.33	5,426.67	32,560.00	33,145.00
	1.7 dCi 150	4WD CVT	28,445.83	5,689.17	34,135.00	35,045.00
	1.3 DIG-T 160	7 speed DCT	25,770.83	5,154.17	30,925.00	31,190.00

COMPANY CAR DRIVERS <sup>A</sup>				
P11D VALUE £	BIK%	MONTHLY £ BIK AT 20%	MONTHLY £ BIK AT 40%	MONTHLY £ BIK AT 45%
25,210.00	35%	147.06	294.12	330.88
26,510.00	35%	154.64	309.28	347.94
28,085.00	37%	173.19	346.38	389.68
27,960.00	37%	172.42	344.84	387.95
29,535.00	37%	182.13	364.27	409.80
26,325.00	33%	144.79	289.58	325.77
27,580.00	35%	160.88	321.77	361.99
29,155.00	37%	179.79	359.58	404.53
29,030.00	37%	179.02	358.04	402.79
30,605.00	37%	188.73	377.46	424.64
27,395.00	33%	150.67	301.35	339.01
29,010.00	35%	169.23	338.45	380.76
30,585.00	37%	188.61	377.22	424.37
30,460.00	37%	187.84	375.67	422.63
32,035.00	37%	197.55	395.10	444.49
28,825.00	33%	158.54	317.08	356.71
31,110.00	36%	186.66	373.32	419.99
32,685.00	37%	201.56	403.12	453.50
32,560.00	37%	200.79	401.57	451.77
34,135.00	37%	210.50	421.00	473.62
30,925.00	33%	170.09	340.18	382.70

## OPTIONS

	VISIA	ACENTA	ACENTA	N-CONNECTA	TEKNA	BASIC £	VAT £	TOTAL £
Metallic Paint	<input type="radio"/>	<input type="radio"/>	<input type="radio"/>	<input type="radio"/>	<input type="radio"/>	479.17	95.83	575
Pearlescent Paint	<input type="radio"/>	<input type="radio"/>	<input type="radio"/>	<input type="radio"/>	<input type="radio"/>	620.83	124.17	745
Premium Metallic Paint	<input type="radio"/>	<input type="radio"/>	<input type="radio"/>	<input type="radio"/>	<input type="radio"/>	620.83	124.17	745
7-Seat Upgrade (2 additional rear seats)	<input type="radio"/>	<input type="radio"/>	<input type="radio"/>	<input type="radio"/>	<input type="radio"/>	833.33	166.67	1000
Tekna 7-seat Upgrade (2 additional rear seats)					<input type="radio"/>	550	110	660
Drive Assist Pack (1.7 dCi 150 Manual): Intelligent Cruise Control, Intelligent Lane Intervention, Lane Keep Assist					<input type="radio"/>	412.50	82.50	495
Visia Safety Shield: Pack: Intelligent Emergency Braking, Forward Collision Warning, Lane Departure Warning, Traffic Sign Recognition, High Beam Assist, Intelligent Rear View Mirror, Front and Rear Parking Sensors	<input type="radio"/>	<input checked="" type="radio"/>	<input checked="" type="radio"/>	<input checked="" type="radio"/>	<input checked="" type="radio"/>	412.50	82.50	495
19" Wind alloy wheels (x4) in silver, black or diamond cut*	<input type="radio"/>	<input type="radio"/>	<input type="radio"/>	<input type="radio"/>	<input type="radio"/>	1109	222	1331
19" ibiscus alloy wheels (x4) in silver, black or diamond cut*	<input type="checkbox"/>	<input type="checkbox"/>	<input type="checkbox"/>	<input type="checkbox"/>	<input type="checkbox"/>	1109	222	1331
Towbar - removable with 7 PIN electrics	<input type="checkbox"/>	<input type="checkbox"/>	<input type="checkbox"/>	<input type="checkbox"/>	<input type="checkbox"/>	535	10704	642.26
Towbar - removable with 13 PIN electrics 7 additional power	<input type="checkbox"/>	<input type="checkbox"/>	<input type="checkbox"/>	<input type="checkbox"/>	<input type="checkbox"/>	645.83	12917	775
Side Styling bars (illuminated)	<input type="checkbox"/>	<input type="checkbox"/>	<input type="checkbox"/>	<input type="checkbox"/>	<input type="checkbox"/>	625	125	750
Loadcarrier (aluminium)	<input type="checkbox"/>	<input type="checkbox"/>	<input type="checkbox"/>	<input type="checkbox"/>	<input type="checkbox"/>	224.16	44.83	269
Cross bars for roof railing	<input type="checkbox"/>	<input type="checkbox"/>	<input type="checkbox"/>	<input type="checkbox"/>	<input type="checkbox"/>	224.16	44.83	269
Luxury textile mats (black or brown)	<input type="checkbox"/>	<input type="checkbox"/>	<input type="checkbox"/>	<input type="checkbox"/>	<input type="checkbox"/>	62.50	12.50	75
Cream Leather					<input type="radio"/>	412.50	82.50	495
Premium Tan Leather with Black Inserts					<input type="radio"/>	412.50	82.50	495
Design Pack: Mirror Caps and Side Door Sills (Chrome or Glossy Black)	<input type="checkbox"/>	<input type="checkbox"/>	<input type="checkbox"/>	<input type="checkbox"/>	<input type="checkbox"/>	249.17	49.83	329
Protection Pack**: Bumper upper protector, luxury velour mats and soft trunkliner	<input type="checkbox"/>	<input type="checkbox"/>	<input type="checkbox"/>	<input type="checkbox"/>	<input type="checkbox"/>	190.83	38.17	229

\*Price quoted is for 4 alloy wheels and does not include tyres

\*\*Available in 5 or 7 seat variants, in black or cream

Dealer fit option prices include fitting but are only a guide. Please check with your local Nissan dealer for exact prices

Optional -  Standard -  Optional Dealer Fit -

\*OTR with solid paint  
Basic and Total Retail prices include delivery to the dealership and number plate. On the Road Price includes 12 months Government Vehicle Excise duty (determined by CO<sub>2</sub> emissions figure and fuel type - see back page for details) and £55 Government First Registration Fee.

[Exterior Design](#) | [Interior Design](#) | [Technology & Performance](#) | [Style & Accessories](#) | [Technical Specifications](#) | [Commitments](#)

[Print](#) | [Close](#)

[Page 1](#) | [Page 2](#) | [Page 3](#) | [Page 4](#) | [Page 5](#) | [Page 6](#) | [Page 7](#) | [Page 8](#) | [Page 9](#)

REQUEST A TEST DRIVE



## FURTHER INFORMATION

**On The Road Prices.** On The Road Price includes 12 months Government Vehicle Excise Duty (VED) determined by CO<sub>2</sub> emissions figure and fuel type, £55 Government First Registration Fee, number plates and delivery to the Nissan Dealership.

VED rates are determined by the vehicles CO<sub>2</sub> emissions figures and by the type of fuel used. The following table applies to all new car registrations:

### VED Band

CO <sub>2</sub> Emissions Figure (g/km)*	Tax Year 2019 to 2020	
	First Year Rate Petrol and RDE2 Diesel	First Year Rate non-RDE2 Diesel
0	£0	£0
1-50	£10	£25
51-75	£25	£110
76-90	£110	£130
91-100	£130	£150
101-110	£150	£170
111-130	£170	£210
131-150	£210	£530
151-170	£530	£855
171-190	£855	£1,280
191-225	£1,280	£1,815
226-255	£1,815	£2,135

\* g/km = grammes of CO<sub>2</sub> per kilometre travelled.





## FURTHER INFORMATION

### VAT and VED

VAT application is based on current HMRC guidelines, please check with HMRC for specific guidance for the vehicle you are purchasing.

VED is determined by the DVLA, please check with the DVLA for specific guidance for the vehicle you are purchasing.

**Optional equipment.** This price list features a selection from the full range of optional equipment, be they standard, dealer fit or factory options.

For further information and details of the full range, please contact your local Authorised Nissan Dealer.

Nissan's commitment to you includes all of the following benefits – some of which may be the reasons why you chose your new Nissan in the first place:

**Manufacturer's warranty** – Nissan's comprehensive warranty provides cover for your new Nissan from defects in materials or workmanship. Your vehicle is covered in all European Countries where Authorised Nissan Dealers are located. If your vehicle becomes inoperative due to a warrantable defect a towing service, when necessary, to the Authorised Nissan Dealer is covered. If a warrantable defect abroad takes more than six hours to repair, the Touring Assistance Programme will pay for a hotel room or rental car up to a certain maximum. The paint warranty covers painted body parts (excluding the underbody) for three years regardless of mileage driven. For further details please contact your local Authorised Nissan Dealer. Petrol and diesel engine cars - Three-year/60,000 miles. Petrol and diesel engine LCVs and Navara - Five-year/100,000 miles.

**LEAF and e-NV200** – Nissan LEAF and e-NV200 offer a 5-year / 60,000 mile warranty on all EV dedicated components, including the lithium-ion battery, and a 3-year / 60,000 mile warranty on standard components. This is with the expression of e-NV200 which offers a 5-year / 60,000 mile warranty on mechanical components and corrosion\*. The Nissan LEAF and e-NV200 lithium-ion battery state of health guarantee protects against battery capacity loss (less than 9 bars out of 12) as shown on LEAF and e-NV200's capacity gauge for a period of 5 years / 60,000 miles. For LEAF and e-NV200 flex customers, the battery state of health guarantee applies for the duration of the battery lease.

\*The Basic Vehicle Warranty for e-NV200, according to 3.1 of the Warranty Booklet and Maintenance Record, is extended to 5 years (from the warranty start date) / 60,000 miles (whichever comes first). Only vehicles registered on or after 1st November 2016 are eligible for the Extended Warranty. Body parts and paint excluded during year four and year five. Terms and exclusions apply, for further information please see Extended Warranty Terms and Conditions. Apart from the afore-mentioned, all warranty conditions included in the Warranty Booklet and Maintenance Record remain unchanged. Issuer of this Extended Warranty is Nissan International Insurance Ltd

## FURTHER INFORMATION

Nissan European Roadside Assistance is provided for the period of your new vehicle manufacturer warranty.

Roadside, Recovery and At Home products are provided by RAC Motoring Services (Registered No. 1424399, Registered Office: 8 Surrey Street, Norwich, NR1 3NG). RAC Motoring Services (in respect of insurance mediation activities only) is authorised and regulated by the Financial Conduct Authority and within the jurisdiction of the Financial Ombudsman Service and Financial Services Compensation Scheme.

Onward Travel and European Cover are underwritten by RAC Insurance Limited (Registered No. 1424399, Registered Office: 8 Surrey Street, Norwich, NR1 3NG). RAC Insurance Limited is authorised and regulated by the Financial Conduct Authority and within the jurisdiction of the Financial Ombudsman Service and Financial Services Compensation Scheme.

Nissan EV Pan-European Roadside Assistance is provided by AXA for 3 years or 60,000 miles, whichever comes first.

For LEAF and e-NV200 Flex (battery lease) customers, the Nissan EV Pan-European Roadside Assistance will cover you for the duration of your battery lease agreement should your Nissan EV run out of battery charge. For any other repair work, the basic warranty clause still applies. Benefits and Services are provided by AXA Assistance. AXA Assistance is authorised and regulated by the Financial Conduct Authority (FCA).

FCA Register number 439069. AXA Assistance UK Limited (registration 2638890) 106 - 118 Station Road, Redhill Surrey RH1 1PR

**Peace of mind** – we always guarantee our workmanship, and all genuine Nissan replacement parts and accessories have a minimum of one year's warranty. Accessory prices are subject to change, please see your nearest dealership for the most up to date prices. Our technicians have been trained by Nissan to work on your vehicle and they are the Nissan specialists. They use the latest equipment to ensure your vehicle is given the best treatment. Accessory prices are subject to change, please see your nearest dealership for the most up to date prices.

**Recyclability** – we take all our environmental responsibilities very seriously - innovation today comes with a deep respect for the environment. Our engines are now much more unobtrusive and their emissions have been considerably reduced. All our vehicles are designed with recycling in mind.

**Nissan Finance** offers a wide range of flexible finance schemes to meet the needs of both our retail and business customers. Preferences, Hire Purchase, Nissan Contract Hire and Finance Lease, all offer the in-built flexibility to make the package tailor-made to meet your individual needs. We also provide added security to your finance agreement with a comprehensive range of payment protection plans. Ask your local Authorised Nissan Dealer for details.

**The Nissan Motability Programme** developed in association with the registered charity Motability enables those with difficulty getting around to obtain selected models on preferential terms.

All prices in this list are quoted in pounds sterling. Value Added Tax (VAT) has been calculated at 20%.

While all reasonable effort has been made to ensure the accuracy of the information provided, due to Nissan's policy of continuous product improvement, all particulars Contained are subject to constant revision and Nissan reserves the right to change, alter or modify, among other things, specifications, colours and prices of models without notice at any time. Accordingly you should consult your local Authorised Nissan Dealer for the exact introduction dates of all models and for the most up-to-date information.

Images shown are for guidance purposes. In some instances photos are of non UK specification vehicles and do not represent a specific model, grade or offer.

## GPF & DPF FILTER

### WHAT IS A GPF & DPF?

A **Gasoline Particulate Filter (GPF)** or **Diesel Particulate Filter (DPF)** forms part of the vehicle's exhaust in order to limit the amount of soot particles contained within the exhaust gas passing into the atmosphere.

When the amount of soot in the filter reaches a specific level, this needs to be reduced in order to maintain the filter's function.

This reduction is called **'REGENERATION'** and is carried out by the vehicle's electronic control system which raises the exhaust gas temperatures during normal driving. If a vehicle requires frequent regeneration due to driving style, these high temperatures cause the engine oil to degrade more quickly.

However, from 2011 onwards Nissan vehicles were fitted with an **OIL CHANGE SUPERVISOR (OCS)** as well as a GPF or DPF to help monitor the condition of the oil and ensure the quality never falls below a minimum level.

### WHAT IF I ONLY DRIVE SHORT JOURNEYS?

If the vehicle is only driven for short journeys, or at low speed, then it may not be possible for regeneration to occur. In this situation, the below warning lights will be illuminated on your dashboard.



Please refer to your Owner's Manual for further information.

After seeing these warning lights you need to drive, as soon as possible, above 40mph until the light goes out. This can take up to 30 minutes depending on the amount of soot collected in the filter.

### WHAT IF I IGNORE THEM?

If you continue to drive at low speeds the exhaust gas temperatures cannot rise, so regeneration cannot occur. In this instance, a combination of the below warning lights will be illuminated on you dashboard.



In this case, and in order to protect the engine and DPF Filter, the vehicle will require **'SERVICE REGENERATION'** which can only be carried out by a workshop equipped with Nissan diagnostic equipment. You will need to go to your nearest Nissan dealer in case the oil and filter needs to be replaced.

With a Nissan Service Plan you will benefit from genuine Nissan parts and Nissan Genuine Motor Oil, which have been engineered specifically for Nissan vehicles.

As **'SERVICE REGENERATION'** is not a manufacturing fault, so the cost will **NOT** be covered under warranty.

## NISSAN INSURANCE

Nissan Insurance has been designed to help Nissan drivers get the most from their cover, boasting the following benefits:

- Use of Nissan Approved Repairers and franchised trained technicians
- Use of only Nissan genuine parts for repairs
- Guaranteed repair for 3 years
- New car replacement, if your vehicle is written off when under 12 months old
- Cover provided for driving in the EU, subject to a maximum 30 days per year
- Personal accident benefit up to £5,000
- Up to £100 personal belongings cover
- £300 towards replacement locks if your keys are lost or stolen

Call Nissan Insurance today on 0344 335 3780

Calls charged at the same rate as local 01 and 02 numbers and will be included in inclusive call packages from mobiles. Lines are open Monday to Friday 9am-7pm and Saturday 9am-5pm.

### Terms and Conditions

Quotations are subject to underwriting terms and acceptance criteria.

Nissan Insurance is arranged by Europa Group Ltd trading as Nissan Insurance Services on behalf of Maiden Global Holdings Ltd (registered in England with company number 07324422) Registered office: Albion House, Valley Business Centre, Gordon Road, High Wycombe, HP13 6EQ. Authorised and regulated by the Financial Conduct Authority. Financial Services Register number 555397. Europa Group Limited is authorised and regulated by the Financial Conduct Authority. Financial Services Register No. 309794. Registered as a limited company in England and Wales No. 3279177. Registered office: Europa House, Midland Way, Thornbury, Bristol BS35 2JX.



OUR PROMISE. YOUR EXPERIENCE.



[REQUEST A TEST DRIVE](#)



There's no time limit on how long you will benefit from our promises. If you are a Nissan Customer, we will look after you. **That is our Promise.**



**FREE COURTESY CAR**

YOU want to stay on the road when your Nissan is in for a service or repair.

NISSAN PROMISE to keep you mobile free of charge whether you need a courtesy car, or just a lift



**FREE VIDEO HEALTH CHECK**

YOU want to understand what is going on with your car's service.

NISSAN PROMISE a free vehicle health check and we can even show you any work that might need doing with your own vehicle assessment ideo.



**SERVICE PRICE MATCH**

YOU want the best value for money when it comes to service and repair.

NISSAN PROMISE simple Fixed Price Servicing, and will price match like-for-like competitor written quotes within 10 miles of your local dealer.



**CONTINUOUS ROADSIDE ASSISTANCE**

YOU want the peace of mind you get from our quality service to go even further.

NISSAN PROMISE to provide you with Roadside Assistance for free every time you service your car with us.



**HERE FOR YOU**

YOU want your problems resolved quickly.

NISSAN PROMISE to propose a resolution to any problem within two working days.



**TEST DRIVE YOUR CHOICE**

YOU want to test drive the latest Nissan model, engine and gearbox you're interested in buying.

NISSAN PROMISE that's what you'll get when you pre-book your test drive either online or through our customer service centre.

**Just call 0330 123 1231.**

Please visit [nissan.co.uk/promise](http://nissan.co.uk/promise). Terms and conditions apply.







Nissan. Innovation that excites.

visit our website at: [www.nissan.co.uk/x-trail](http://www.nissan.co.uk/x-trail)

Dealer stamp:

Follow Nissan X-Trail on:



Every effort has been made to ensure that the content of this publication is correct at the time of going to press (May 2019). This brochure has been produced featuring prototype vehicles exhibited at motor shows. In accordance with the company's policy of continuously improving its products, Nissan International reserves the right to change at any time the specification and the vehicles described and shown in this publication. Nissan dealers will be informed of any such modifications as quickly as possible. Please check with your local Nissan dealer to receive the most up-to-date information. Because of the limitations of the printing processes used, the colours shown in this brochure may differ slightly from the actual colours of the paint and interior trim materials used. All rights reserved. Reproduction in whole or part of this brochure without the written permission of Nissan International is forbidden. Part Number: 99999-54411 Printed in the UK

[REQUEST A TEST DRIVE](#)

